



Hinweistafel (H)







SAD1

Ri.  Teublitz/
Bruck i.d.OPf.
ab XX.XX.2025
gesperrt

2 Wochen vor
Beginn aufzustellen

Geschwindigkeitstrichter

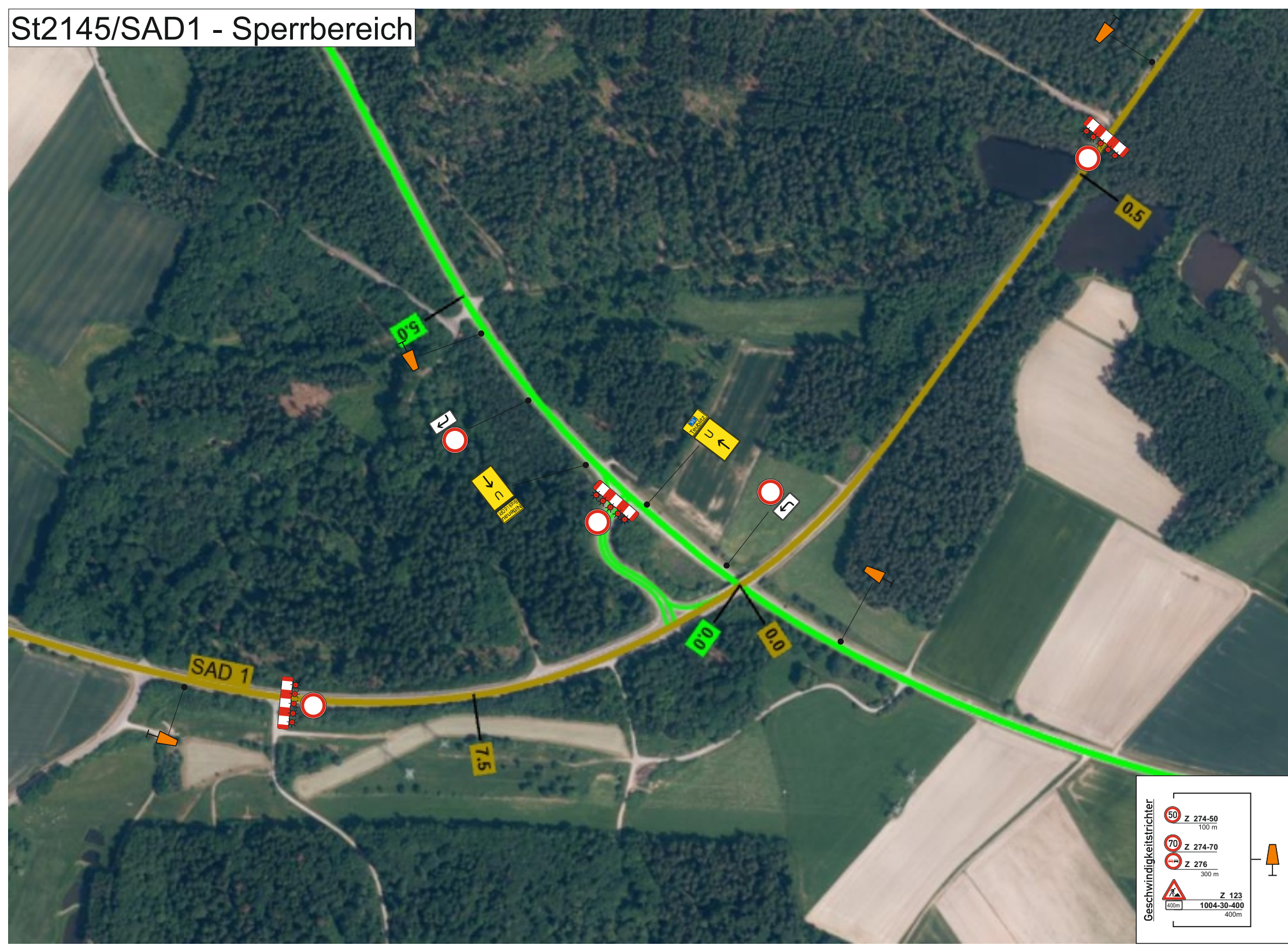
	Z 274-50	100 m
	Z 274-70	300 m
	Z 276	300 m
	Z 123	400m
	1004-30-400	400m








St2145/SAD1 - Sperrbereich



Geschwindigkeitstrichter

	Z 274-50	100 m
	Z 274-70	
	Z 276	300 m
	Z 123	
	1004-30-400	400m



Detail Anschluss Abfahrtsrampe St2145



SAD2 - AS Schwandorf-Süd



